

Aerolam **X** **LPE**



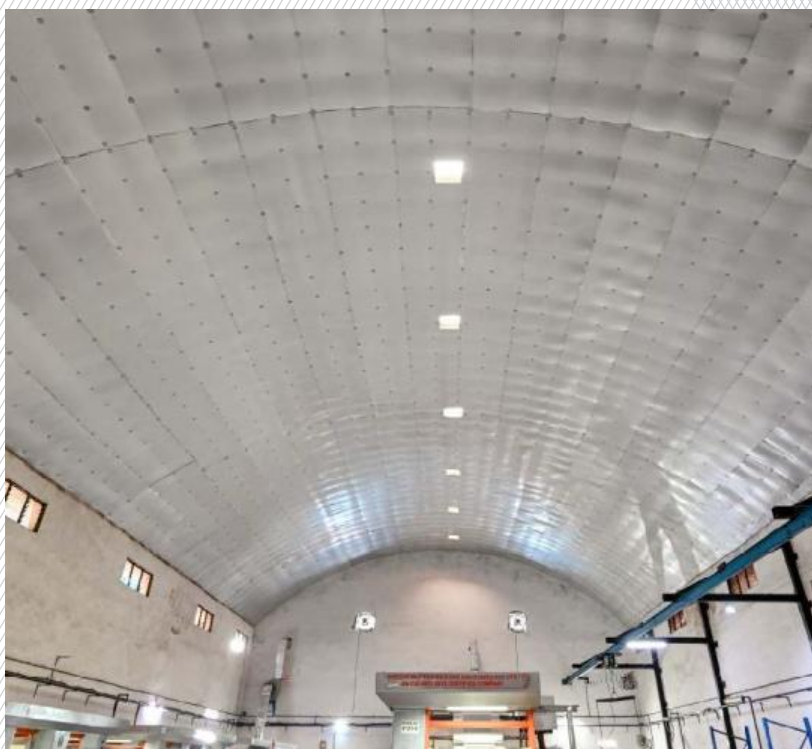
[ALFATHERM INSULATION.COM](http://ALFATHERM INSULATION.COM)

# Aerolam XLPE

Aerolam XLPE being a versatile material it can be used as under deck insulation, duct & pipe insulation and various applications in automobile industries.

In under-deck application, XLPE can be instilled in new roof, existing roof (without removing metal sheet) & also in curved roofing without any support.

Chemically cross linked closed cell polyethylene foam insulation is specially designed for HVAC segment, Under deck insulation and Pipe insulation. **AEROLAM XLPE** is manufactured using world class manufacturing equipment and facilities, capable of manufacturing products in line with the highest international standards. Highest quality raw materials, practices and quality management systems enable **AEROLAM XLPE** to deliver the best quality end-product.



## SPECIFICATIONS

Density : 30+ 3 kg/m<sup>3</sup> | Width : 1200 mm | Color: Grey

Thickness (mm) : 3, 5, 6, 9, 13, 15, 19, 25, 32, 40, 50  
(We can manufacture XLPE starting from 3 mm upto 140 mm)  
Material is supplied in standard roll length for each thickness.  
contact us for available customize roll lengths.





# FEATURES

- Negligible Water/Moisture Absorption
- Excellent Thermal & Acoustic Insulation
- Resistance to Fungi
- Chemically Unreactive
- Wide Operating Temperature Range
- Stable K Value
- Maintenance Free
- Flexible & Easy to Install
- AEROLAM XLPE PIPE INSULATION with Various Cladding Options available are :- Alupet, Glass Cloth, Aeroclad & Copper Tube also

## XLPE FORM-DIMENSIONS & SIZES THAT ARE MANUFACTURED IN ROLLS / SHEETS / TUBES

XLPE	THICKNESS RANGE	WIDTH	LENGTH
ROLLS	3mm~25mm	1.2m	100m for lower thickness. And 16m for higher thickness.
SHEETS	30mm~50mm	1.2m	2m

## AEROLAM XLPE TUBINGS ARE MANUFACTURED FOR METAL/UPVC/CPVC PIPE FITTING SIZES.

XLPE	THICKNESS RANGE	INNER DIAMETER	LENGTH
TUBES	6mm~50mm	6mm~457mm	2m

\*XLPE Tubes upto diameter 1200mm possible.

Thickness (mm)	Width (mtr)	Length (mtr)	Total SQM	Thickness (mm)	Width (mtr)	Length (mtr)	Total SQM
3	1.2	100	120	15	1.2	25	30
4				19		20	24
5				25		16	19.2
6				30		2	2.4
8				32			
9				40			
12				45			
13				30		36	36

### Types of facings/Laminations/Coatings to XLPE

Aluminium foil, Alupet, Metpet, Aeroclad, Black Glass Cloth, UV, Self Adhesive & Plain.



# TECHNICAL DATA

Material	Aerolam XLPE is chemically cross-linked closed cell polyolefin foam with or without facing material and acrylic pressure sensitive adhesive backing
----------	---

## PHYSICAL PROPERTIES

Parameter	Standard	Value		
Density	ASTM D3575	30 KG/M3 (Foam core only)		
Thermal Conductivity	IS 3346/ASTM C518	Mean Temperature(°C)	W/m °K	Kcal/hr m (°C)
		0	0.0318	0.0273
		23	0.0329	0.0283
		46	0.0382	0.0328
Water Vapor Permeability	ASTM E96	1.4 x 10 <sup>14</sup> kg/pa.s.m		
Water Vapor Permeance	ASTM E96	Almost zero		
Water Absorption by Volume	JIS K6767	0.00056 mg/m <sup>2</sup>		
Water Vapour Resistance Factor (μ) - mu	EN 12086	97,900		
Resistance to Fungi	ASTM G21	Zero Growth		
Resistance to Bacteria	ASTM E2180	No Growth		
CFC & HCFC Free	USEPA 8260 B	Comply		
UV Resistance	ASTM G155	Excellent		
Accelerated Weathering Test	ISO 4892	Excellent		
VOC Level (Green Star Rating)	ASTM D5116	0.018 mg/m <sup>2</sup> /hr		
ROHS	IEC 62321	Comply		
Resistance to Chemical	ASTM C543	Very Good		

## FIRE & SMOKE PROPERTIES

Class O	BS 476 Part 6 & 7	Comply
Reaction to Fire(NFPA 90A & B)	ASTM E84	FLAME Spread Index <25
		Smoke Development Index <50
Hot Surface Performance (NFPA 90A & B)	ASTM C411	Comply
European Railway Standard for Fire & Smoke	EN 45545	Comply to R1HL3 Requirement
Fire Classification of Construction Products	EN 13501	Comply to B-s1 d0
Smoke Density	ISO 5659-2	Comply
Deterioration of visibility due to smoke	ULC 564	Class A
Horizontal Burning Test	UL-94	Approved with HF-1 Class (File No:E 504824)
FM Approval	FM 4924	COC Approval Identification:3063893



ALFATHERM INSULATION.COM